



Shear Beam Hermetically Sealed Load Cell

VLC-B100SH

APPLICATIONS

- Tank Weighing
- Hopper Weighing
- Platform Scales

WIRING

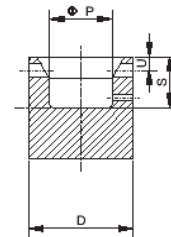
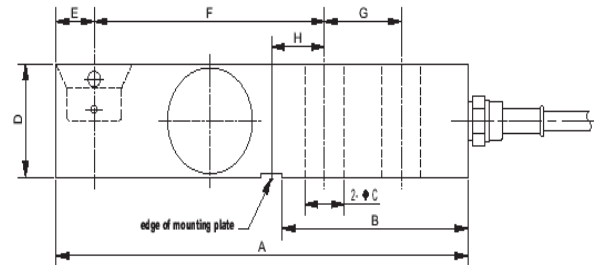
RED	Input (+)
BLACK	Input (-)
GREEN	Output (+)
WHITE	Output (-)

CAPACITY (K)

1, 2, 2.5, 4, 5

SPECIFICATIONS

Rated Output	2mV/V ± 0.2%
Non-Linearity	0.03% F.S.
Hysteresis	0.03% F.S.
Non-repeatability	0.02% F.S.
Creep (in 1 hr)	0.03% F.S.
Zero Balance	± 1%
Temp. effect span	15 PPM/°C
Temp. effect zero	26 PPM/°C
Operating Temp. range	- 20°C ~ + 60°C
Compensated Temp. range	- 10°C ~ + 40°C
Input resistance	410 ± 15Ω
Output resistance	350 ± 3Ω
Safe overload	150% F.S.
Ultimate overload	300% F.S.
Excitation voltage	10VDC/AC
Max. Excitation voltage	15VDC/AC
Insulation resistance	≥ 2000MΩ
Environmental protection	IP68
Material	Stainless steel
Cable length	20FT



DIMENSION

Capacity (K)	Size (inch)										
	A	B	C	D	E	F	G	H	P	S	U
1 - 5	5.37	2.42	0.51	1.18	0.50	3.00	1.00	0.68	7.09	0.59	0.16

Virtual Measurements & Control Inc

196 Coffey Lane, Suite 604, Santa Rosa, CA95403
Tel: (707) 573 3111 Fax: (707) 573 3113

Virtual Measurements & Control (Asia) Pte Ltd

24 Hillview Terrace, Singapore 669235
Tel: (65) 6762 5522 Fax: (65) 6763 6656

Dealer